

Splunk App Release Analytics with Puppet

Get real-time visibility, reporting and automation

BENEFITS OF INTEGRATION

- **Ingest and monitor** all data from Puppet Enterprise, then correlate that data across your entire tech stack.
- **Visualize** your Puppet data with out-of-the-box dashboards for easy troubleshooting.
- **Detect** an issue and take immediate action through Puppet scripts using the Splunk ITSI notable events framework.
- **Configure** automatic remediation using Puppet manifests through machine learning or individual action.

Many enterprise IT organizations rely on Splunk and Puppet Enterprise to operate essential applications. Yet, today these business-critical tools are often used in silos. In order to take action on the insights the Splunk platform provides, customer must manually intervene, which slows their ability to remediate issues.

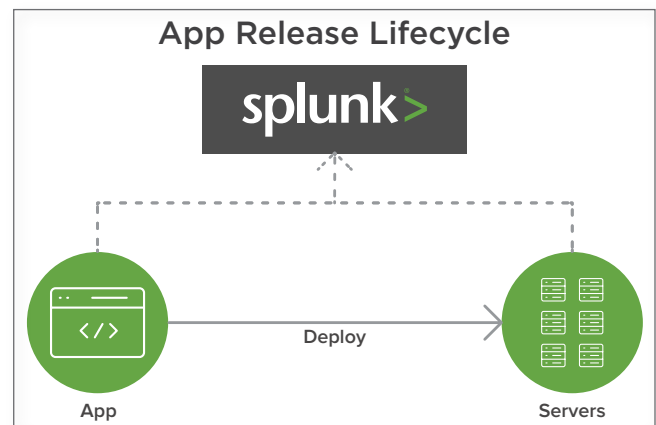
Splunk and Puppet have the capabilities to address multiple enterprise initiatives that give organizations a modern way to discover with insights, analyze with intelligence, and act quickly while successfully scaling their DevOps and transformational practices across the enterprise.

The Splunk platform provides real-time insights across all stages of the delivery lifecycle — from application development, to test and production monitoring — enabling IT teams to quickly improve the velocity, quality and business impact of application delivery. Developers can search and visualize data from entire build pipelines

and production environments without needing to access production machines. IT Operations teams can gain rolerelevant operational insights with a prebuilt collection of dashboards, reports and saved searches using data harnessed from business services and technology tiers in your IT infrastructure. Splunk integrates with nearly every tool you can think of across the dev build pipeline and every data source impacting your IT and security environment.

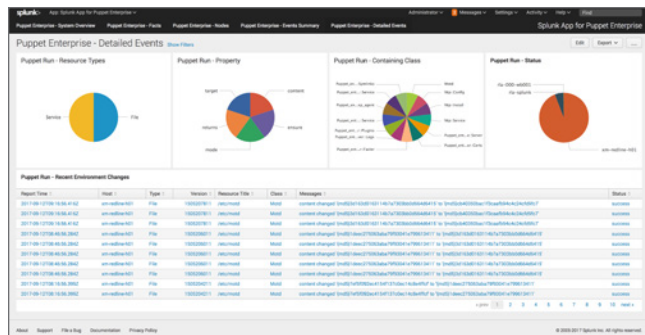
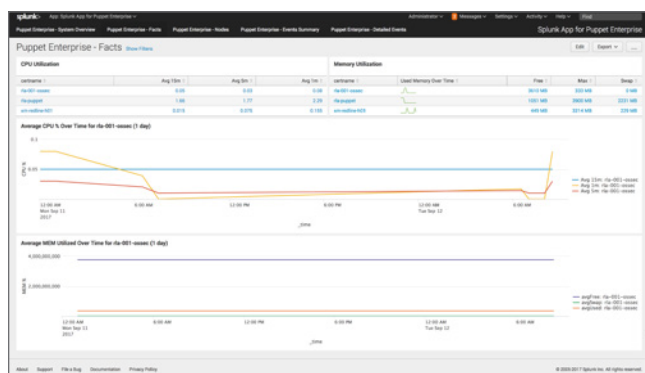
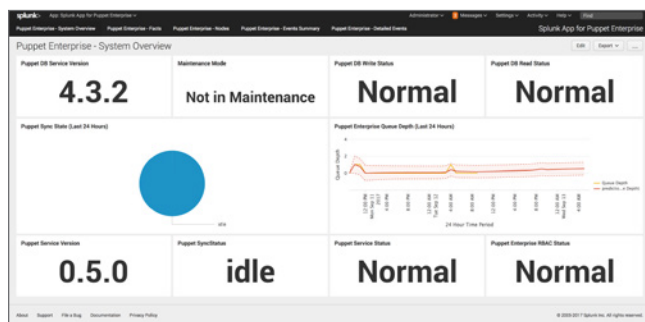
Puppet Enterprise manages infrastructure as code, providing the foundation for DevOps practices such as versioning, automated testing and continuous delivery. Many enterprise IT organizations rely on Splunk software and Puppet Enterprise to operate essential applications. Yet, these business-critical tools today are often used in silos. In order to take action on the insights the Splunk platform provides, customers must manually intervene, which slows their ability to remediate issues.

Splunk and Puppet have unique and complementary solutions that address the need for analysis and automation to help organizations transform their business to achieve ultimate success. Together, Splunk and Puppet are helping IT teams build a foundation of continuous analysis and automation across their entire organization.



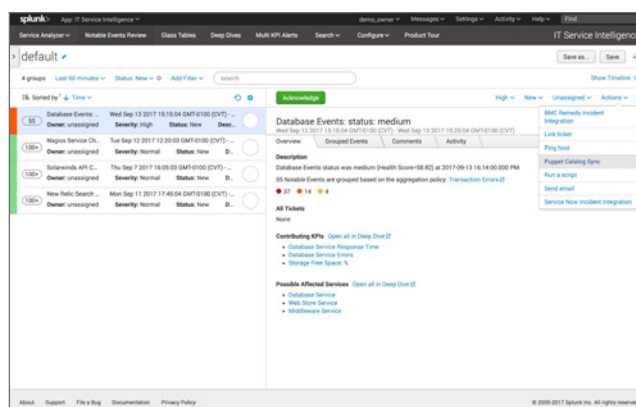
SPLUNK APP AND ADD-ON FOR PUPPET ENTERPRISE

The Splunk App and Add-On for Puppet Enterprise enable joint customers to ingest and analyze data from your Puppet environments, monitor the health of resources under management, correlate that data across your entire tech stack, as well as visualize your Puppet data using out-of-the-box dashboards for easy troubleshooting and monitoring. The Splunk Add-On gets the data in and the Splunk App for Puppet Enterprise provides the visualization.



SPLUNK IT SERVICE INTELLIGENCE (ITSI) INTEGRATION

The new Splunk ITSI Module for Puppet Enterprise enables customers to trigger a Puppet job when a Splunk ITSI notable event is detected. For example, when a vulnerability is detected, customers can run Puppet to remediate the vulnerability. This integration provides a unified workflow between the intelligent insights provided by Splunk and the action and automation provided by Puppet, making it easier to keep applications and infrastructure performant, secure and compliant.



Additional Resources: [Splunk App for Puppet Enterprise](#), [Splunk Add-On for Puppet Enterprise](#), [Splunk ITSI Module for Puppet Enterprise](#), [Splunk Module for Puppet Enterprise](#).



Learn more: www.splunk.com/asksales

www.splunk.com