

# DCOI COMPLIANCE

Cost effective, sustainable compliance for the Data Center Optimization Initiative

OMB memorandum [M-16-19](#) titles the Data Center Optimization Initiative (DCOI) was signed effective Aug. 1, 2016. It supersedes the Federal Data Center Consolidation Initiative (FDCCI) that was launched in 2010 and applies to the 24 CFO agencies including the Department of Defense. As part of [FITARA](#), the Office of Management and Budget (OMB) is required by law to implement the initiative to optimize the usage and efficiency of federal data centers, which includes consolidating and maximizing server utilization and energy efficiency.

Agencies are required by law to achieve and maintain all listed target values below by the end of fiscal year 2018. Additionally by the end of FY 2018, agencies will be required to use automated infrastructure management in lieu of manual collection and reporting of systems, software and hardware inventory.

## Splunk

Data centers create data fast, which requires aggregation and correlation in real time for optimal results. Every smart or connected instrument generates data - an authoritative record of its inputs, decisions and actions. When this machine data is aggregated from all relevant sources, it can be harnessed and correlated with contextual information to deliver unprecedented insights into performance, availability, security and safety, and resilient functioning of the data center.

Splunk's software is a massively scalable data analytics platform for machine-generated data. The Splunk platform collects, indexes and harnesses machine data across your infrastructure in real time and offers a cost effective and flexible way to meet your compliance requirements from audit trail collection to self reporting to quickly pinpointing issues and alerting for remediations.

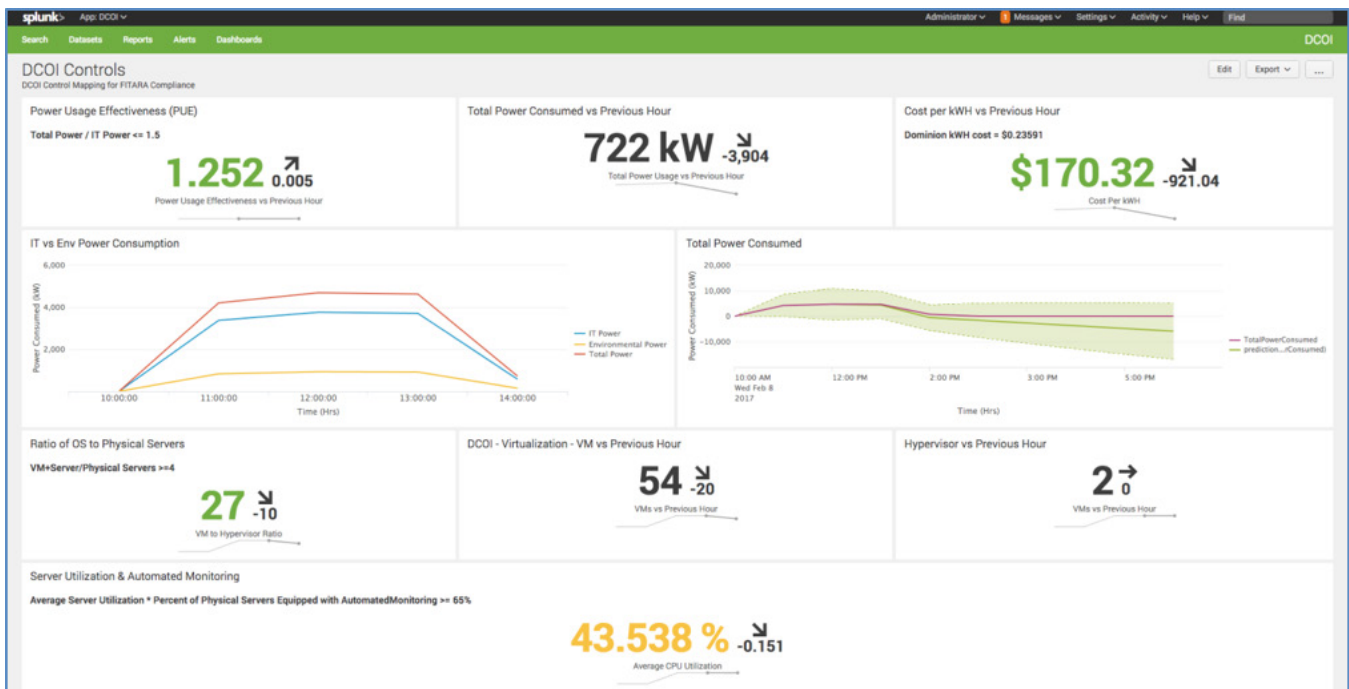
Metric	Definition	Calculation	FYE 2018 Target Value
<b>Energy Metering</b>	(%) Percent of total gross floor area (GFA) in an agency's tiered data center inventory located in tiered data centers that have power metering.	Total GFA of Energy Metered Data Centers / Total GFA of All Tiered Data Centers	100%
<b>Power Usage Effectiveness (PUE)</b>	(Ratio) Proportion of total data center energy used by IT equipment.	Total Energy Used / Total IT Equipment Energy Used	≤ 1.5% (≤ 1.4 for new data centers)
<b>Virtualization</b>	(Ratio) Ratio of operating systems (OS) to physical servers.	Total Server Count + Total Virtual OS / Total Physical Servers	≥ 4%
<b>Server Utilization &amp; Automated Monitoring</b>	(%) Percent of time busy (measured as 1 - percent of time spent idle), measured directly by continuous, automated monitoring software, discounted by the fraction of data centers fully equipped with automated monitoring.	Average Server Utilization * Percent of Physical Servers Equipped with Automated Monitoring	≥ 65%
<b>Facility Utilization</b>	(%) Portion of total gross floor area in tiered data centers that is actively utilized for racks that contain IT equipment.	Total Active Rack Count * 30 sq. ft. / Total Gross Floor Area	≥ 80%

With the Splunk platform, public sector organizations can:

- Locate, visualize and manage machine data sources from physical assets within an integrated single pane-of-glass for an entire agency's infrastructure
- Scale to ingest, aggregate and correlate terabytes or petabytes of data per day
- Track capacity utilization and availability of managed space including but not limited to floor space, rack space, PDU power capacity, circuit breaker load, cooling capacity, patch panel ports and physical servers
- Display energy efficiency information such as power usage effectiveness (PUE), including any supplementary tools and instruments

- Gain insight and monitor virtual machines and physical servers, such as OS servers, web servers, app servers, and database servers for utilization, and to calculate and meet the targets of DCOI
- Generate any DCOI report in seconds and automate reporting to compliance analysts and auditors with scheduled searches and reports in real time

Available as an on-premise, SaaS or hybrid offering, the Splunk platform is able to provide access to real-time, actionable information for valuable decision support and key performance indicators across multiple datacenters (multisite support).



Thousands of public and private sector enterprises rely on Splunk products to improve security, increase efficiencies, make data-driven decisions and gain tactical and strategic advantages. [Learn more.](#)



Learn more: [www.splunk.com/asksales](http://www.splunk.com/asksales)

[www.splunk.com](http://www.splunk.com)