

Splunk TV

View, access and manage Splunk dashboards on Apple, Android, or Fire TVs

- **Keep your team on the same page.** Splunk® TV enables your team to easily see and monitor what's going on within your business.
- **Customize your TV experience.** Splunk TV provides a variety of ways to present and share your dashboards to your target audience, such as slideshows or split screens.
- **Manage your TVs with ease.** Splunk TV seamlessly supports the ability to set up and centrally manage multiple TVs and dashboards at scale.



Splunk TV enables your business to easily visualize your data on the big screen and revolutionizes the way your company can leverage, understand, and share data. Whether you want to access a single dashboard or a set, the large, rich visualizations make it simple for your team to quickly analyze any situation. Deploying Splunk TV and securely managing this data has never been easier. Admins can easily connect to the Splunk Secure Gateway and begin using Splunk TV in just a few clicks.



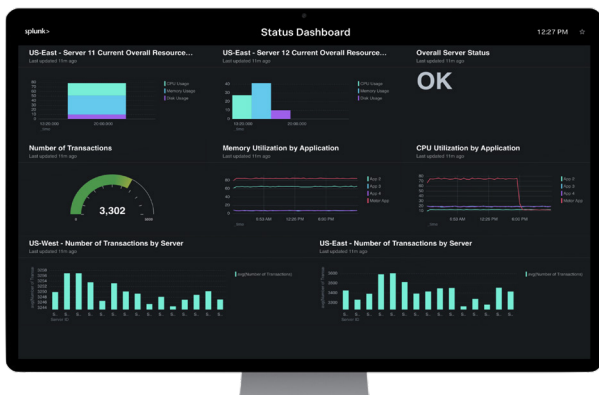
What can Splunk TV do for you?

- **Reduce costs** by eliminating the need for multiple connected computers and instead leverage cost effective Apple, Android, or Fire TVs.
- **Guard against data manipulation** by displaying read-only data, preventing unwanted edits with keyboards and mice.
- **Improve team collaboration** and support rapidly-changing environments with the ability to remotely deploy dashboards to multiple TVs.

Splunk TV is available to all Splunk Cloud™ or Splunk® Enterprise customers and empowers your workforce to access up-to-date Splunk data from any location. With Splunk TV providing insights for your business — even remotely — maintaining operational excellence has never been easier.

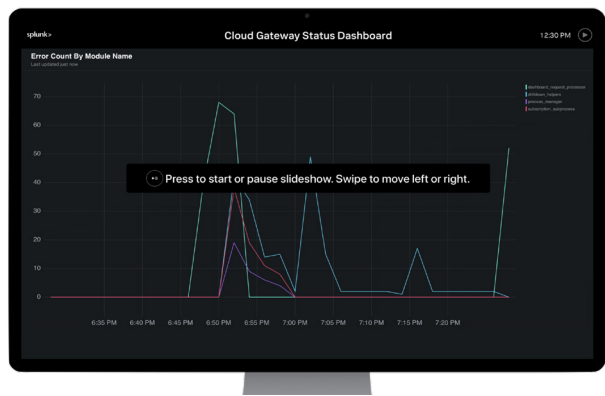
Splunk TV Visualizations

Large visualizations, natively built for the television screen, make it simple to quickly track and understand important data. TV dashboards are built to seamlessly integrate with your Splunk instance, so getting started is effortless.



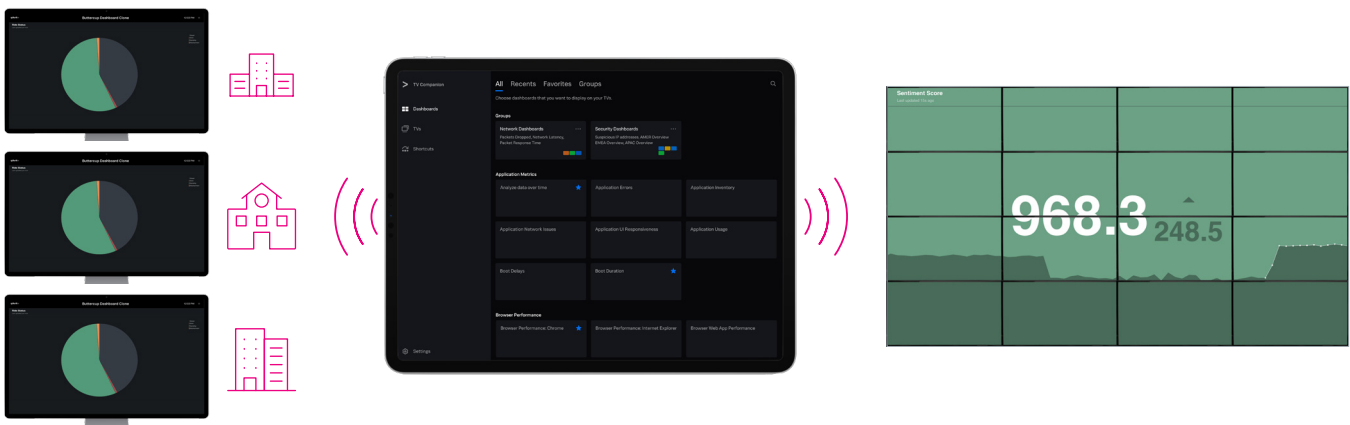
Slideshow

Easily create a slideshow of dashboards in just a few taps. Slideshows can cascade multiple visualizations to your team and make it easy for you to display and manage sets of related dashboards.



Splunk TV Companion

Splunk TV Companion allows you to seamlessly control multiple TVs through a single interface. Whether you have several TVs in a single location or are remotely managing a collection of TVs across the globe, use Splunk TV to coordinate your workforce around important events from a central location and effortlessly bring dashboards to the attention of those who need it.



For more information, contact the [Splunk TV Product Team](#).



Learn more: www.splunk.com/asksales

www.splunk.com