

Splunk Mobile

Analyze data and receive actionable alerts on-the-go with mobile-friendly dashboards

- **Investigate anywhere.** Splunk® Mobile gives you access to Splunk data and dashboards across your devices.
- **Take action, anytime.** Splunk Mobile empowers you to address events, even when you are away from your desk.
- **Deploy across platforms with ease.** Splunk Mobile has been tailored to iOS and Android platforms, allows SAML authentication and supports popular mobile device management (MDM) providers.
- **Integrate with the Splunk ecosystem.** Splunk Mobile allows you to work across Splunk® Enterprise, Splunk Cloud™, Phantom* and Splunk® Infrastructure Monitoring.*



Splunk Mobile enables you to unlock value from Splunk, even when on the go. Regardless of your role or level of technical expertise, you can use Splunk Mobile to view dashboards and quickly take action from your mobile device. Whether you are a c-suite executive looking for a report, a NOC manager investigating an issue, or a SOC analyst uncovering an anomaly, with the power of Splunk in the palm of your hands, getting to resolution has never been faster or more convenient.



How can Splunk Mobile simplify your life?

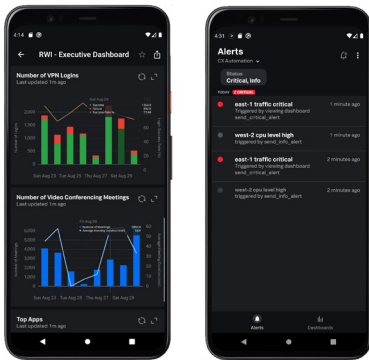
- **Setup and manage multiple Splunk instances quickly and securely** from a single interface.
- **Share information and take action** by leveraging real-time alerts for critical events in your Splunk instance.
- **Gain insights and improve time to resolution** by granting your departments access to live data on mobile devices

*iOS only

Splunk Mobile is a free app, available to all Splunk Cloud or Splunk Enterprise customers. Splunk Mobile enables better, faster decisions by making it simple for anyone to access data on-the-go.

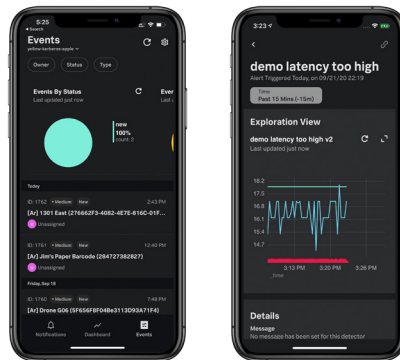
Splunk Mobile Alerts

Ensure your users have the visibility they need. When data triggers an alert, Splunk Mobile users receive a notification and can view, respond to, or share an alert. Alerts keep your team informed of outages, incidents, and other occurrences.



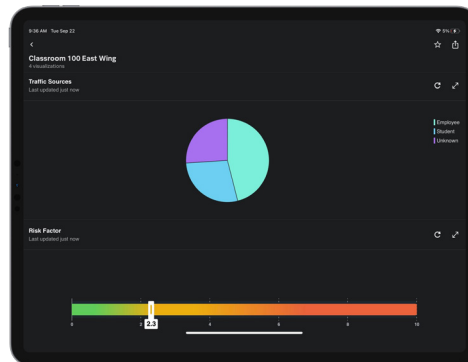
Product Integrations

Bring the power of Splunk premium services to your pocket. For instance, you can monitor and execute Phantom playbooks for your security use cases or troubleshoot and trace app performance with Splunk Infrastructure Monitoring.



Device Security

Splunk Mobile can be securely deployed with many popular Mobile Device Management (MDM) providers, giving users more flexibility, security, and control, as well as ensuring data is kept secure regardless of whether it is accessed on a personal or corporate device.



Splunk Secure Gateway

Administer and manage your fleet of mobile devices at scale with Splunk Secure Gateway. The Splunk Secure Gateway acts as bridge for mobile devices to connect to your Splunk instance and allows for secure exchange of data with any registered mobile device. Splunk Secure Gateway is required for use of Splunk Mobile or other Splunk Connected Experiences applications.

Splunk Secure Gateway can also be used to set up SAML authentication, so organizations can use single sign-on (SSO) for identity and access management.

For more information, contact the [Splunk Mobile Product Team](#).



Learn more: www.splunk.com/asksales

www.splunk.com