

# Splunk Apps & Add-Ons

Enhance and Extend the Value of the Splunk Platform

## HIGHLIGHTS

- Empower users with pre-built dashboards, reports and alerts
- Onboard data from hundreds of common data sources
- Customize and extend Splunk platform functionality
- Choose from hundreds of apps in Splunkbase
- Create and contribute your own apps and add-ons using developer guidance at dev.splunk.com

## Apps - Visualization, Analysis and Action

Apps are the key way to deliver the power of Splunk to any user, providing an intuitive experience designed to get the most from your data. With apps, users of any type can troubleshoot problems or discover opportunities with ease. Apps typically provide:

- Pre-built dashboards, reports, alerts and workflows
- In-depth data analysis for power users
- Point-and-click analytics for business users

Apps provide an optimized work environment, but can still allow access to all data and functions of the Splunk platform. The scope of an app can range from simply monitoring a single data source to analyzing and correlating a diverse set of systems or applications. Based on a simple and transparent methodology, apps can easily be created or customized by anyone—customer, partner or Splunk.

## Overview

The Splunk platform imports and indexes virtually any machine data, and provides powerful search and analysis features that deliver immediate value to your business. Apps and add-ons enhance and extend the platform with ready-to-use functions ranging from optimized data collection to complete user applications for security, IT operations and more.

Apps and add-ons enable the Splunk platform to address your specific needs quickly and easily. The Splunkbase library has hundreds of apps and add-ons from Splunk, our partners and our community. With apps and add-ons, you can get powerful results, right out of the box, for most common data sources and user needs\*.

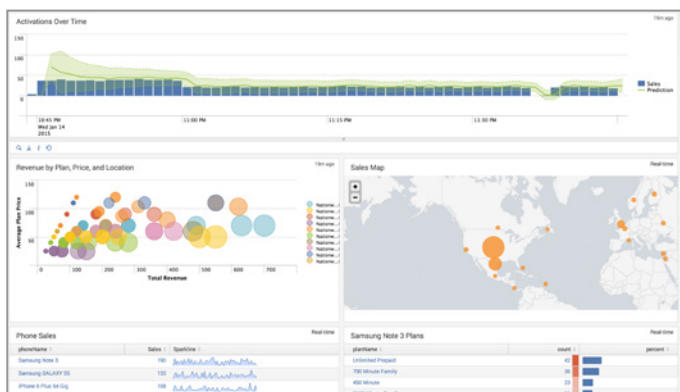


Figure 1: Splunk App Experience




Figure 2: Splunk App and Add-Ons Coverage


## Featured Splunk Apps

Splunk develops and supports key apps and add-ons that provide data connectivity and rich functionality for specific resources and tasks. These apps may include multi-source views, role-based functions and specific analytics and workflows appropriate to the data source. [Learn more.](#)


### Splunk Mobile Intelligence (MINT)

 Track and troubleshoot mobile apps and total transaction performance in real time and drive business by correlating activity across any channel.


### Splunk App for AWS

 Ensure cloud security and compliance by using AWS CloudTrail and Config data streams to monitor user activity and resources in real time.


### Splunk App for HadoopOps

 Proactively monitor Hadoop clusters and associated hardware and software infrastructure spanning multiple data centers.


### Splunk App for Stream

 Capture, analyze and correlate network wire data to monitor operations and end-to-end transactions without manual instrumentation.

### Splunk DB Connect

 Get business and enterprise context such as customer, product and HR data using real-time integration into traditional relational databases.

### Splunk ODBC Driver

 Empower any user to visualize data from Splunk Enterprise and discover insights via familiar tools like MS Excel and Tableau.

## Splunkbase

The Splunkbase library has hundreds of apps and add-ons from Splunk, our partners and our community. For most any data source and any user need, you can leverage an app to get enhanced value with a click. Visit [Splunkbase](#).

## App Development and Developer Support

Learn more about building apps and add-ons at [dev.splunk.com](#).

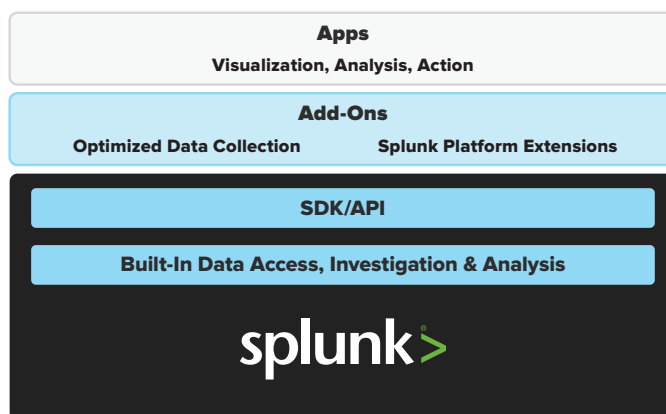


Figure 3: Splunk App and Add-Ons Architecture

## Add-Ons—Optimized Data Collection and More

Add-ons are re-usable components that perform functions to enable apps or general user activities. Most add-ons onboard data from a particular source—automatically selecting fields, tagging data and mapping it to standard models to prepare it for analysis or use in apps. To create this rich data set, these technology add-ons:

- Onboard data from hundreds of common sources
- Automatically select, identify and tag fields
- Enrich data using other information sources

### Add-Ons vs. Traditional Connectors

Splunk technology add-ons are different from connectors used by many other products and vendors. Traditionally, connectors are required to onboard data and identify fields. And these connectors typically require specialized vendor services to create and maintain up-to-date versions for each source.

In contrast, Splunk add-ons are not required for data onboarding and general analysis. Instead, add-ons are an optional way to aid analysis by identifying and tagging specialized data fields. Up-to-date add-ons are readily available through Splunkbase, and you can easily customize or create your own for a unique data source or changing need. You maintain control of your deployment and there's no need to pay or wait for an outside vendor to service your requests.

### Platform Extensions

A different class of add-ons extend the core functionality of the Splunk platform. Once installed, these **extensions and modular add-ons** become an integral and visible part of your standard Splunk capabilities. Whether reading data from proprietary APIs, generating calls to outside systems, or creating custom-defined functions, these add-ons give you the flexibility to extend Splunk to meet your particular needs.

\* Note: Not all apps and add-ons are compatible with all Splunk products. Refer to descriptions in Splunkbase for details.