

Splunk® App for Windows

Monitoring the Foundation of the Enterprise Infrastructure

HIGHLIGHTS

- Monitor key Windows Server performance metrics
- Provide real-time centralized visibility across entire Windows Server and Client infrastructure
- Maintain compliance of updates and application usage
- Drive rapid issue identification, lower MTTR and maximum uptime

The modern enterprise datacenter is built on a best-in-class approach based on multiple software components by more than one vendor. Regardless of the multiple vendor solutions in use, the mission-critical applications and services that run the business have one common foundation—Microsoft Windows. The Windows operating system is the foundation on which many organizations depend to keep their business-critical applications and services running. Real-time monitoring of the Windows platform is needed to ensure it operates at the optimal level.

The Splunk App for Windows

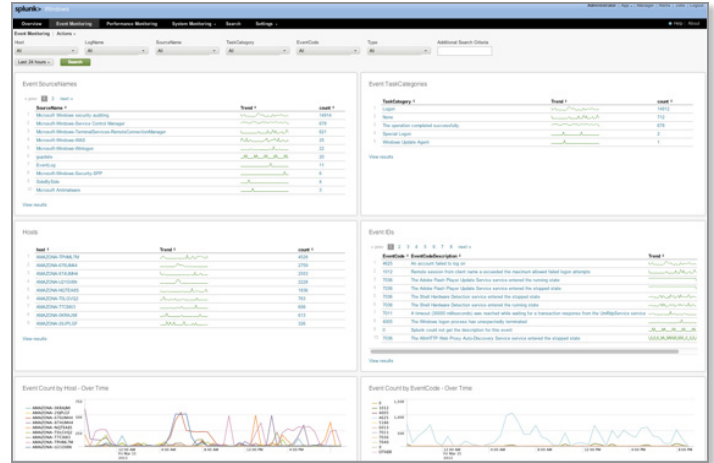
The Splunk App for Windows is the solution that helps reduce complexity and minimize the monitoring burden. It introduces a common framework that enterprises can follow to pinpoint performance issues that are impacting their mission-critical business applications and services.

The Splunk App for Windows provides pre-built searches, reports and dashboards for Windows Server and Client monitoring. Windows administrators can view real-time trends, dashboards and reports to pinpoint performance issues and reduce mean time to repair problems. IT organizations can view service availability, security events, application usage and updates, while also drilling into details on key performance metrics.

With the Splunk App for Windows you can:

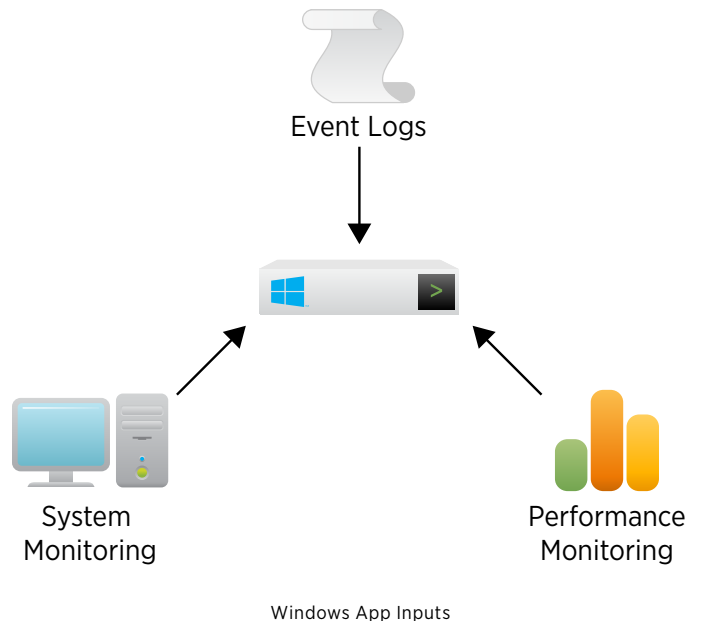
- Monitor CPU, memory, network and disk utilization across one or more systems

- Monitor Windows Update successful and failed packages, application installations and application crashes on hosts across your environment
- Monitor all Windows event logs across your environment, including Application, System and Security



The Splunk App for Windows collects data from the following sources:

- Event Log information for Application, System and Security
- Performance Metrics for CPU, Memory, Disk and Network
- Windows Update history



Splunk App for Windows Features

The Splunk App for Windows provides several specialized features to monitor Windows Server and Client data. Dashboard views include:

Overview – Intended to provide information about the data that is being collected and reported on by the Splunk App for Windows

Events Monitoring – Contains information on all the events generated by the event log channels being monitored—such as Application, System and Security

Performance Monitoring – Contains information on CPU, Memory, Physical Disk, LogicalDisk, Network Interface and System

System Monitoring – Contains information on Application crashes, Application installs and Windows Updates

Correlation across your Enterprise Infrastructure

Combine your Windows Infrastructure data from other technology tiers such as applications, other operating systems, storage and network devices to gain complete end-to-end service level insight.

App Requirements

The Splunk App for Windows supports Windows Server 2003, 2003 R2, Windows Server 2008, Windows Server 2008 R2, Windows Server 2012, Windows Vista, Windows 7 and Windows 8.

Splunk Requirements

All instances of Splunk in a Splunk App for Windows deployment must run version 4.3.5 or later.

Microsoft Certification

As a Microsoft Gold Certified Partner, Splunk is committed to delivering innovative solutions and technologies that enable organizations to be operationally aware of the Windows IT infrastructure they manage. Splunk provides the tools to manage the Windows foundation for customer success.

Splunk is listed on the Microsoft Pinpoint Marketplace.

Microsoft Partner

Gold Application Development

Features	Splunk Free	Splunk Enterprise
Maximum indexing volume per day	500MB	Unlimited (According to license)
Universal, real-time indexing	•	•
Index replication		•
Real-time and historical search	•	•
Distributed search		•
Monitoring and alerting		•
Reporting and sharing	•	•
Accelerated reporting	•	•
Knowledge mapping	•	•
Dashboards	•	•
Role-based access controls		•
Single sign-on		•
Data forwarding and receiving	•	•
Developer platform (API, SDKs)	•	•
Splunk apps	•	•
Standard support	•	•
Enterprise support		•

Free Download

Download [Splunk](#) for free. You'll get a Splunk Enterprise license for 60 days and you can index up to 500 megabytes of data per day. After 60 days, or anytime before then, you can convert to a perpetual Free license or purchase an Enterprise license by contacting sales@splunk.com.