

# USING MODULES IN SPLUNK IT SERVICE INTELLIGENCE

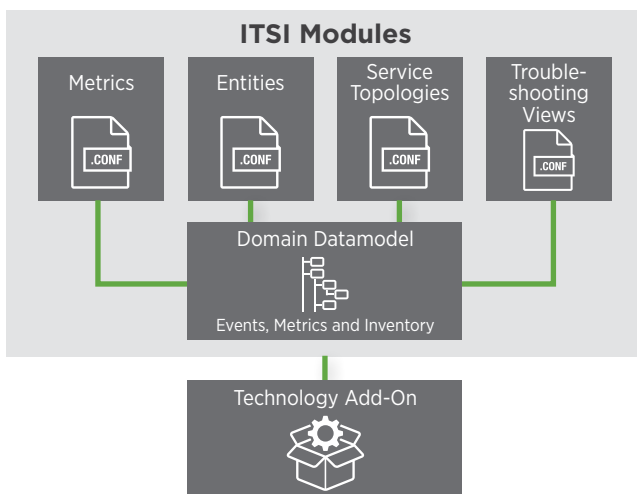
Fast-track data collection, simplify service definitions and accelerate insights

## Modules Overview

Splunk IT Service Intelligence modules are designed to fast-track data collection, simplify service definitions and accelerate insights across technology domains. Using these modules can help you quickly get additional value from Splunk ITSI, including:

- Useful preconfigured key performance indicators (KPIs)
- Entity and service configurations
- Advanced dashboards

Modules work with Splunk Add-Ons to collect data, map data into a data model, and transform data to deliver intelligence and provide out-of-the-box dashboards. This gives you deeper insights into data without a lot of manual configuration. The modules also accelerate self-service productivity and eliminate the need for costly add-ons, customizations and extensions—all to enable faster and more accurate insights.



## Available Modules

Splunk ITSI provides easy-to-install modules, including built-in modules for application servers, databases, load balancers, operating systems, virtualization, web servers, storage, infrastructure-as-a-service, mobile end-user experience and new stack infrastructure. Some of these are available on [Splunkbase](#).\*

Third-party developers can also create modules and make them available on Splunkbase. You can search for available modules on Splunkbase or through the Module Manager in Splunk ITSI.

## Best Practices on Using Modules

Using modules is designed to be a simple process. Guided, in-browser configurations make it easier to create and deploy third-party and custom modules.

## Gather Data

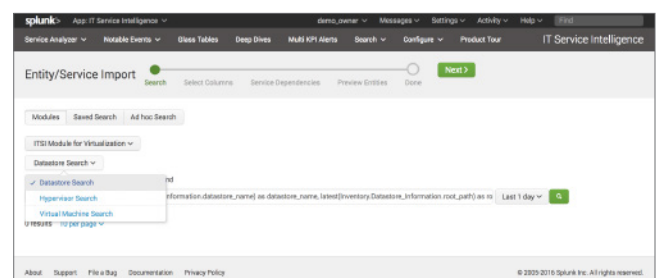
The easiest way to ensure your data will work with Splunk ITSI modules is to use Splunk Add-Ons to gather the data.

For the OS module, for example, use the Splunk Add-On for \*nix or the Splunk Add-On for Microsoft Windows to collect OS metrics.

If you have a mix of operating systems in your environment, the data will be mapped to predefined domain-relevant data models, so the metrics that matter are calculated, regardless of which OS the data is coming from.

## Identify Entities

To identify entities in Splunk ITSI, use the searches included with the modules. When you create new entities using the **Import from Search** option, select **Modules**, and you will be able to choose the appropriate search from the installed modules. You'll see a list of entities that meet the criteria for the module.

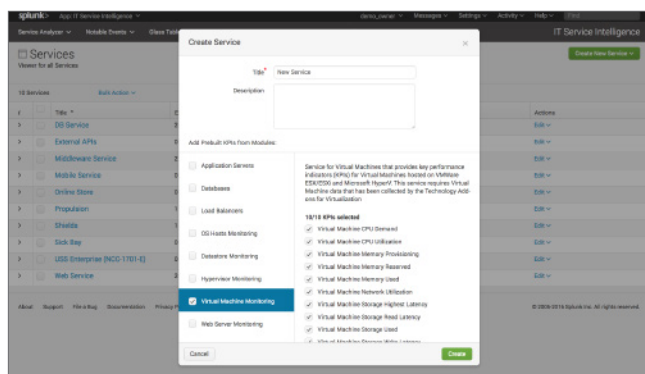


\* A valid Splunk ITSI license is needed to download and install modules.

## Create Services

The next step is to create your services. When you create a new service, you can add prebuilt KPIs from the installed modules. Select the KPIs that you want to monitor and they will be automatically created for you.

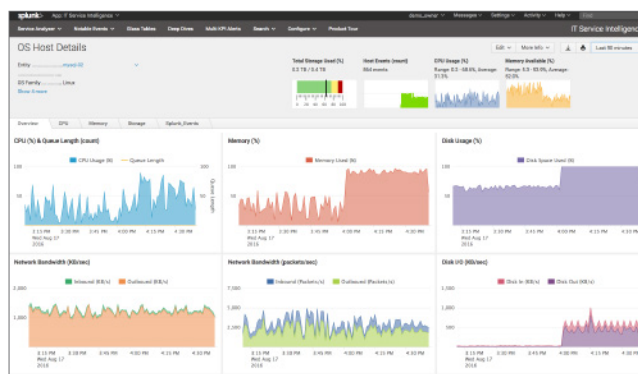
You can also add preconfigured KPIs to your services later by selecting the desired KPI from the dropdown menu. Your services can also contain a mix of preconfigured KPIs from modules and manually created KPIs, to ensure that you have all the KPIs needed to measure the health of your services.



## View Detailed Reports

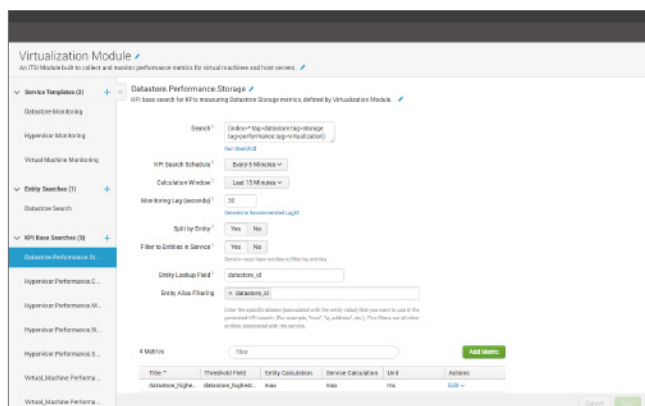
Once you've configured your entities and services, you can maximize the value of modules by using built-in reports.

The easiest way to get to the reports is from the **Entity Details** page—all of the modules that apply to a particular entity are listed here, and clicking one will take you to the reports.



## Module Management

You can see what modules you have installed and also find new modules using the Module Manager in Splunk ITSI.



## Custom Modules

Building **custom modules** is similar to building a Splunk App. Modules contain predefined content that enable you to capture a collection of entities, define KPIs and services, and build visualizations that use the resulting metrics to deliver deep service-oriented insights into individual technology domains. Packaging all of this content in a module lets you share your configurations with others.

## Next Steps

Gain access to a 7-day personal Splunk ITSI sandbox in the cloud, where you can experience the power of Splunk ITSI for free. Learn more at [splunk.com/ITSI](http://splunk.com/ITSI).



Learn more: [www.splunk.com/asksales](http://www.splunk.com/asksales)

[www.splunk.com](http://www.splunk.com)