

SPLUNK ACADEMIC ALLIANCE PROGRAM

Faculty & IT Staff Toolkit



Using this toolkit

The Splunk Academic Alliance program can be customized to your learners and your program to help you maximize the value of Splunk Education in your classroom. In this kit you will find:

- Information to guide Faculty/IT Staff
- Slides for Faculty/IT Staff to share with students



Faculty and IT Staff Resources



Faculty/IT Staff

Program At-a-Glance

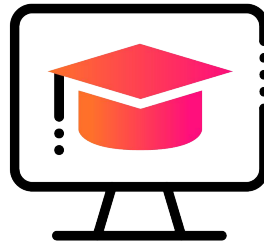
**Helping grow the cyber
workforce of tomorrow**

Splunk provides
academic institutions
with equitable access to
our platform for solving
global challenges through
product donation and
workforce development.



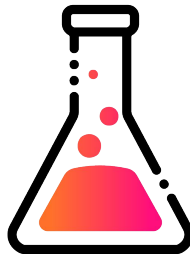
A 10GB, 1-year renewable license for Splunk Enterprise, access to Splunk App for Enterprise Security (ES), access to the SOAR Community edition of our popular software.

[Get more details here.](#)



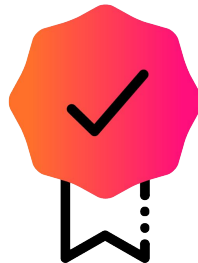
Students, faculty, and IT staff have access to 21 Self-Paced Courses, which are part of the Splunk Basic Subscription Plan – a \$90K value.

[Learn more here](#) or [Register to get started.](#)



To support a more real-world experience, the 21 Self-Paced Courses include 4-hour access to a lab environment three times per course. Lab documents are located within each course.

[Find out more about labs here.](#)



After completing the required courses, students can receive a free Splunk Certification voucher to cover exam fees – a \$130 value per exam.

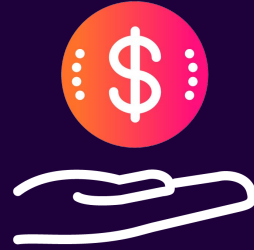
[Learn about Splunk Certification here.](#)

Faculty/IT Staff

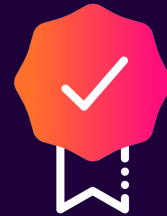
Why Splunk

Integrate Splunk Education courses into your IT and cyber curriculum so your students are prepared for the future of data analytics.

How learning Splunk is impacting the careers of its users



Proficient Splunk users reported earning more than a year ago



Splunk Certified users earn more than their peers in the same cohort

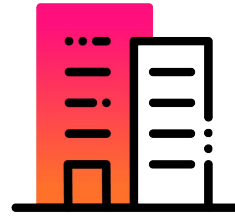


Proficient Splunk users experienced a steep rise in promotions in past 12 months

Faculty/IT Staff

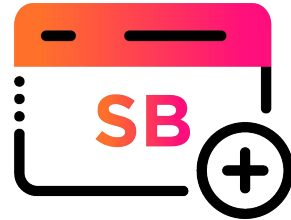
Using Licenses

Splunk Enterprise
Splunk Enterprise Security
Splunk SOAR



Splunk Enterprise License

The university official who registered for the program should have received an email including instructions and an .xml file for the 10GB, 1-year license (sometimes filtered as spam). This license can be applied to servers and devices for student learning. [Use these instructions for installation support.](#)



Splunk Enterprise Security

Splunk Enterprise Security access is provided to the university official who registered for the program. This app can be [downloaded from Splunkbase](#) and used with the Splunk Enterprise License in their environment.



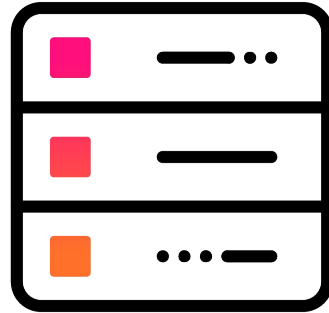
Splunk SOAR Community Edition

[Splunk SOAR is a community edition license](#) that does not require any prior authorization or licensing to use. Anyone within the university is entitled to use up to 100 actions per day. This enables students to leverage automation with all the features of Splunk SOAR.

Faculty/IT Staff

Using Data

Showcase the
features of Splunk
Enterprise using
tutorial data



Tutorial Data

Splunk Tutorial Data is a data set commonly used for training purposes. It is based on a fictional company imagined by Splunky Engineers. Feel free to ingest this into your environment and have some fun Splunking ButterCup Games. [Get the data here.](#)

Faculty/IT Staff

Teach Splunk

Best Practices

Follow these tips for integrating Splunk training into your course curriculum.

- 1 Get familiar with the free software included in your membership including the 10GB [Splunk Enterprise](#) license, [Splunk App for Enterprise Security \(ES\)](#) and the [SOAR Community edition](#).
- 2 Incorporate the [21 free courses with labs](#) into your syllabus at the start of the semester.
- 3 Consider taking a few of the [21 free courses](#) yourself.
- 4 Introduce the Splunk Academic Alliance program to your students at the start of the semester using the slides in the ***Student Resources*** section (*starting at slide 11*).
- 5 Dedicate part of one lecture to remind and encourage students to take the free training and labs – sharing how the program can lead to working in a SOC (*See slide 10*).
- 6 Create a prompt about using Splunk in a student-powered SOC program for a class discussion or collect insight through another forum.
- 7 Request Certification Vouchers by emailing certification@splunk.com and then share the information with your students about getting Splunk Certified (*see slide 15*).

Faculty/IT Staff

Powering the SOC

Universities using
Splunk software,
training, and education
resources to develop
student workers for
their SOC



Cal Poly SLO is operating a student powered SOC with 2-4 students engaged per quarter. Over 1M threats are thwarted each day and response to incidents reduced to under 5 minutes.



Trained through the Splunk Academic Alliance, students in UNLV's SOC are gaining hands-on security experience while remediating critical vulnerabilities in the university's digital environment.



Louisiana State University, working in conjunction the Louisiana Board of Regents developed a student-powered SOC that serves as a model to share resources and cyber intelligence across the 31 state HE institutions.

Faculty/IT Staff

Powering the SOC

Read up on the value
and the best practices
in our latest handbook.

[Download the report
here](#)

The Student-Powered SOC Handbook

Protect your university today while training
the security leaders of tomorrow

splunk>
a CISCO company

Securing our ivory towers: Universities and growing cyber threats

Universities are notorious for being vulnerable to phishing attacks. California Polytechnic State University (Cal Poly), for one, receives over a million hits a day that they consider attacks on the university. But the security challenges higher education institutions face extend far beyond one vector, and it's complicated by a number of factors — from the complexity of cyber attacks and IT environments, to the small and shrinking security workforce.

The volume and complexity of cyber attacks continue to be on the rise.

Higher education is increasingly a cybercrime target. As a whole, the education sector has seen a 75% year-over-year increase to 3,574 weekly attacks. The volume of attacks isn't the only issue, as bad actors continue to get smarter at exploiting the vast stores of personal information schools store and manage. An implication is the increased time needed to detect and remediate these pernicious attacks.

Complex hybrid environments expand attack surfaces.

Colleges and universities struggle to fill IT staffing shortages.

Like many U.S. industries, the public sector faces a shrinking cybersecurity workforce. Nearly three-quarters (74%) of campus leaders say that hiring IT employees is a "moderate" or "severe" challenge. With only 59 trained workers available for every 100 jobs across the industry as a whole, many of those positions won't be filled, especially in a sector that struggles to compete with the eye-popping salaries and benefit packages of industries like technology and financial services.

The education
sector has seen a
75% year-over-year
increase to
**3,574 weekly
attacks.**

Fulfilling two missions with one student-powered SOC

To address these challenges, some of the country's best institutions of higher learning are stepping up in an inventive way. They're tapping into the expertise and potential of their own students by welcoming them into the heart of their security operations through on-campus student-powered SOC's.

The core mission of every college and university is to teach and prepare students for a career or next chapter. By hiring students to work alongside professional security professionals, institutions offer students the opportunity to develop skillsets they can carry with them throughout their careers, while receiving real-world training that will set them up for future success.

And then, of course, is the core mission of an institution's security team: to protect its students and employees from bad actors trying to break in and do meaningful harm. Having students in the SOC multiplies the security team, giving professional staff the time and capacity to address strategic and operational things while the students "provide the first, tier-one response," says Doug Lomsdalen, chief information security officer for Cal Poly and one of the original leaders on the idea of the student-powered SOC concept.



At LSU, if an incident happened after six, seven, or eight o'clock at night, it would not get looked at until the next morning. Now, with the SOC program, we have 24/7 coverage, 365 days a year, increasing the overall security posture of LSU and the state.

— Sumit Jain, CISO, Louisiana State University

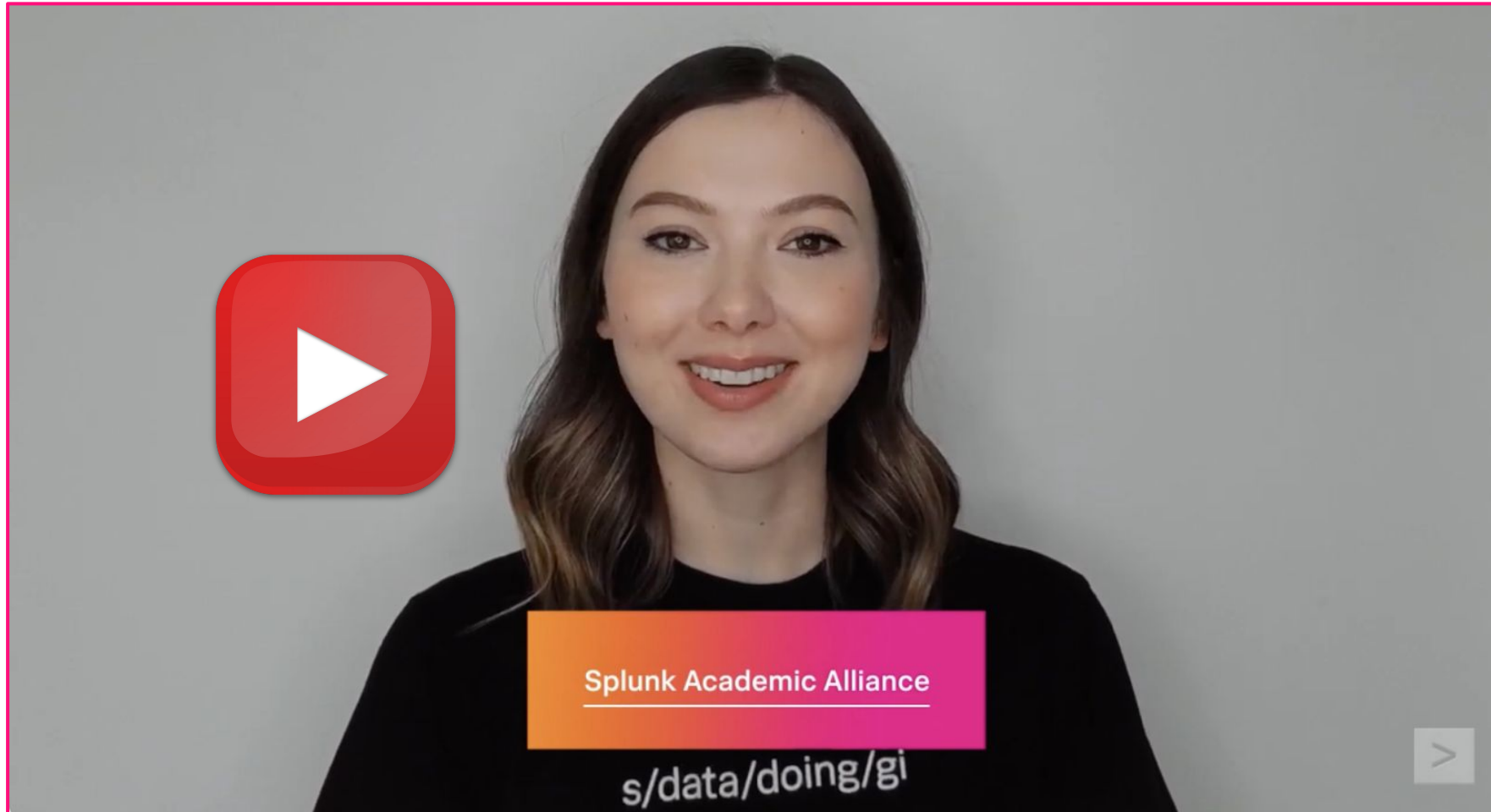
Student Resources



Students

View Program

Watch an overview of the Splunk Academic Alliance Program to see how students and staff can quickly get started.



[View the Program](#)

Students

Splunk Account

Create a Splunk.com account to access the 21 eLearning courses and hands-on labs.


Before you can benefit from the Splunk Academic Alliance program, all students must set up a [Splunk.com account](#) using your school-issued email address..

splunk>
a **CISCO** company

Create Your Splunk Account

Already Have a Splunk Account? [Login >](#)

Business Email REQUIRED

Password 


First name

Last name

Job Title

Phone Number

Company

United States 

Zip / Postal Code

☐ I agree to the [Splunk General Terms](#) and [Splunk Website Terms & Conditions of Use](#).

Create Your Account

Students

Learn Splunk

The Splunk Academic Alliance Program includes 21 eLearning courses from Splunk with hands-on labs.

Find out more in class!



We will be working the [21 free Splunk eLearning courses](#) into our curriculum and assignments. These courses include hands-on labs so we can analyze real-world data together.



You can view the free Splunk eLearning courses [here](#) and watch your syllabus for specific course completion recommendations.

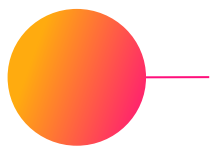
Q&A

The eLearning is hosted on the Splunk Training and Enablement Platform (STEP). [Find out more about using the platform in this Q&A](#)

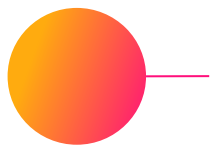
Students

Get Certified

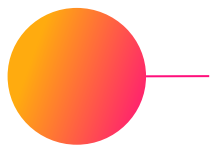
Splunk provides each student with one voucher to take a Splunk Certification exam. *Splunk Certifications are valid for three years.*



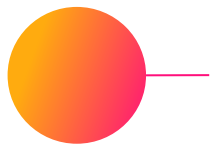
Request an exam voucher from your instructor.



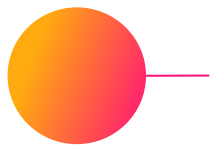
Prepare using the exam blueprint in the [Certification Handbook](#) (Appendix A).



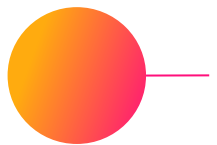
Connect your account to the testing platform with this step-by-step [registration guide](#).



Use the voucher code at checkout when you register for the exam on the Pearson VUE website.



Take your exam at a Pearson VUE testing center or via their [online proctor system](#).



Email certification@splunk.com with any questions.

Questions?

Academicalliance@splunk.com

