

# Virtualization Management — Large

Professional Services Offering

## Overview

Professional Services virtualization services offer Splunk expertise targeted to provide operational insight to your virtualized environment for proactive analysis and reporting so that you can identify and remediate issues and errors with your virtualized infrastructure. These services are backed by Splunk experts, ensuring consistent and quality delivery, architecture, training and ongoing sustainment for Splunk in your enterprise.

## Virtualization Management Offering

Unlock the value of your data and provide visibility into performance metrics, logs, tasks and events from your virtualized environment. The offering includes:

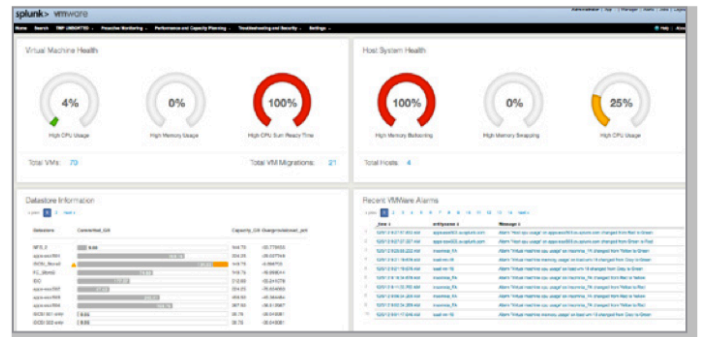
- **Environment review and documented recommendations:** Validation of existing environment, examination of current use cases and future plans for Splunk software. Develop and deliver against the project plan to bring Splunk insights to your virtualized environment.
- **Definition of key metrics:** Determine relevant and critical metrics in your virtualized environment.
- **Custom reports and dashboards:** Provide expert assistance to identify critical information about your virtual environment and create reporting and dashboard content to visually depict key performance indicators.
- **Deploy and extend the Splunk Enterprise solution into your virtualized environment:** Provide best practices and expert guidance in order to tailor Splunk Enterprise to your virtual assets. This includes applications such as the Splunk App for VMware, Splunk App for XenDesktop or Splunk App for XenApp.
- **Custom alerts and notifications:** Configuration and implementation of event-based notifications and proactive alerts designed to provide immediate awareness of the anomalies in your environment.
- **Updated deployment documentation:** Create a comprehensive set of documentation and project artifacts to provide an operational overview of your virtualized environment.
- **Duration:** Three (3) weeks

## Targeted Customer Attributes

The Splunk PS Virtualization (Large) offering is designed to unlock the value of your data and provide visibility into performance metrics, logs, tasks and events from your virtualized environment.

*This Professional Services offering is designed for customers with the following attributes:*

- **VMware Implementation:**  
A maximum of up to four (4) vCenter hosts and eight (8) Data Collection Nodes (VMware App) supporting up to 400 ESXi hosts
- **Citrix Implementation:**  
Installation and configuration of the Splunk App for XenDesktop or XenApp to support a maximum of up to 10 Brokers (XenDesktop) or 250 Servers (XenApp)
- Currently using Deployment Server in the production environment for distribution



**Operational metrics and proactive management for your entire virtualized portfolio.**

## Benefits

- **Proactive monitoring of virtualized environments:** Identify issues and drill down to the root cause of the problem using new visualizations.
- **Correlation of virtualization data with knowledge from other technology tiers:** Find causal links between application performance issues and the underlying virtual manager, storage, networking and server infrastructure.
- **Granular performance management and analysis:** Collect and persist deep granular performance data directly from the hosts and trace virtual asset performance from host to host to troubleshoot related issues.
- **Complete operational visibility and capacity analytics:** Find capacity-constrained hosts, idle virtual assets, underutilized clusters, overprovisioned data stores; trend performance statistics to find usage patterns and likely capacity bottlenecks.
- **Change tracking and asset reporting:** Track detailed user-initiated changes; automate actions as well as report on inventory and status of virtual components.
- **Security reporting and monitoring:** Monitor the environment for suspicious activity, user role changes, unauthorized access and more.

## Splunk Professional Services

We are here to help customers get the most out of their Splunk deployments. Our services are backed by Splunk experts, who provide consistent and quality service delivery, architecture guidance, training and ongoing support.

Take your Splunk environment to the next level and achieve continual optimization, enhanced processes and active collaboration.

### Free Download

[Download Splunk](#) for free. You'll get a Splunk Enterprise license for 60 days and you can index up to 500 megabytes of data per day. After 60 days, or anytime before then, you can convert to a perpetual Free license or purchase an Enterprise license by contacting [sales@splunk.com](mailto:sales@splunk.com).